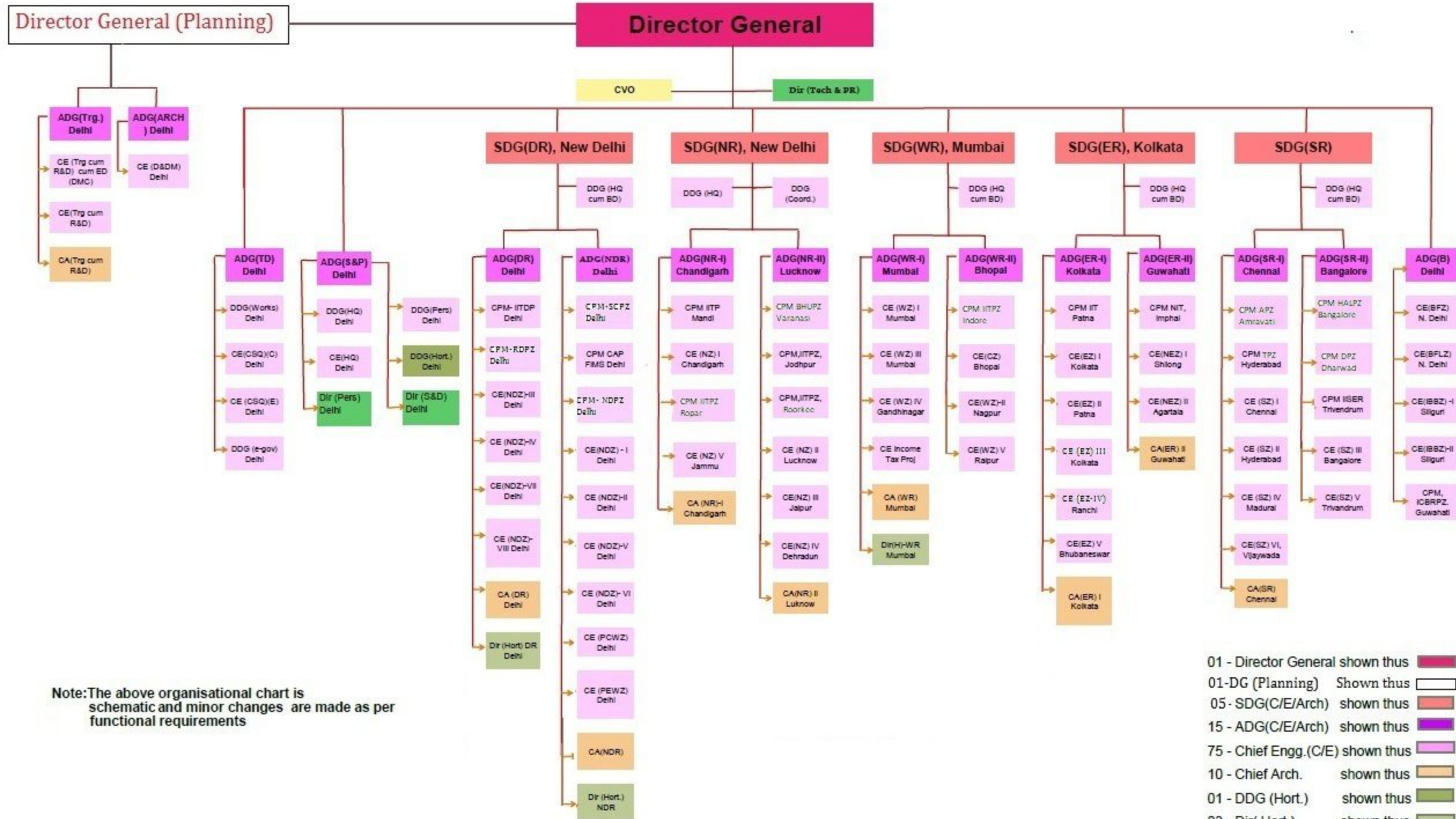


# ORGANISATION CHART OF CPWD



Note: The above organisational chart is schematic and minor changes are made as per functional requirements

- 01 - Director General shown thus
- 01-DG (Planning) Shown thus
- 05- SDG(C/E/Arch) shown thus
- 15- ADG(C/E/Arch) shown thus
- 75- Chief Engg.(C/E) shown thus
- 10- Chief Arch. shown thus
- 01- DDG (Hort.) shown thus
- 03- Dir( Hort.) shown thus