

# INTERIOR WORKS

- DEFENCE OFFICE COMPLEX
  - WHO-INTERIM OFFICE
    - IDBI ZONAL OFFICE
      - GPOA 2
- INTERNATIONAL GUEST HOUSE



# DEFENCE OFFICE COMPLEX

KG MARG AND AFRICA AVENUE, NEW DELHI

Area- 1,00,000 sqm (approx)(combined)

Cost Estimate- 613 cr

Time Period – 12 months



METAL MESH CEILING

MODULAR  
WORKSTATIONS

BAMBOOWOOD  
FLOORING

BLOCK C OPEN OFFICE



PERFORATED METAL  
CEILING

VENEER CLADDING  
ON WALLS

GRANITE FLOORING



BLOCK C LIFT LOBBY

TEXTURE PAINT ON  
COLUMN



BLOCK C OPEN OFFICE



BLOCK A OPEN OFFICE





CAFETERIA



LIFT LOBBY

PERFORATED METAL  
CEILING

LACQUERED GLASS

GRANITE FLOORING



CERAMIC TILE DADO

TOILET



OPEN OFFICE

- Sh. Vijay Prakash Rao, Senior Architect (CVP/PRND) - 9711400983
- Sh. Anurag Gangwar, Architect - 9415111629
- SH. Yogendra Pal Singh, Architect - 8218881401
- Sh. Vinay Kumar, Architect - 9711343715
- Sh. Neeraj Kumar, Asst. Architect
- Smt. Poonam Wadhwa, Technical Officer
- Smt. Lipika Ghosh, Asst. AD
- Smt. Madhu Monga, Asst. AD

- Sh. S P Chaudhary, SDG (PRND) - 9868143434
- Sh. Manohar Lal , CE cum ED - 9873745312
- Sh. Sudhir Tiwari, Executive Engineer (Civil) - 9811922213
- Sh. Subrata Burman, Executive Engineer (Electrical) (Retd)
- Ms. Shieney Singhal, Executive Engineer (Civil) - 9818586304
- Sh. Abhay Verma, AEE (Civil)
- Sh. Rajesh Ghunawat, AEE (Civil)
- Sh. Mahesh Dungriyal, AEE(Electrical)
- Mr. Naresh Sharma, AEE (Electrical)
- Sh. Vinod Srivastav, AE (Civil)
- Sh. Mukesh Diwedi, AE(Civil)



# WHO-INTERIM OFFICE

ITRA CAMPUS, JAMNAGAR, GUJARAT

Area- 12500 sqm (approx)

Cost Estimate- 13.5 cr

Time Period – 4 months









GRC JAALI

TEXTURE PAINT ON  
EXTERIOR

HPL ON PORCH



EXTERIOR

HPL ON PORCH

VENEER ON DOOR



MAIN ENTRY

GRANITE FLOORING

METAL FINS FALSE  
CEILING

TEXTURE PAINT

GRANITE FLOORING



RECEPTION

LIPPAN ART WORK IN  
POP



RECEPTION





VENEER FALSE  
CEILING

WOODEN BATTENS  
ON STEEL BARS

GRANITE FLOORING



EXHIBITION SPACE



OPEN CELL FALSE  
CEILING

GYPSUM

VENEER CLADDING  
ON WALLS

GRANITE FLOORING

EXHIBITION SPACE

OPEN CELL FALSE  
CEILING

GYPSUM BOARD  
FALSE CEILING



STUDY HALL



OPEN CELL FALSE  
CEILING

GRANITE FLOORING

CAFETERIA



GYPSUM BOARD  
FALSE CEILING

VENEER CLADDING  
ON WALLS

BENT/CURVED GLASS

GRANITE FLOORING

LIBRARY

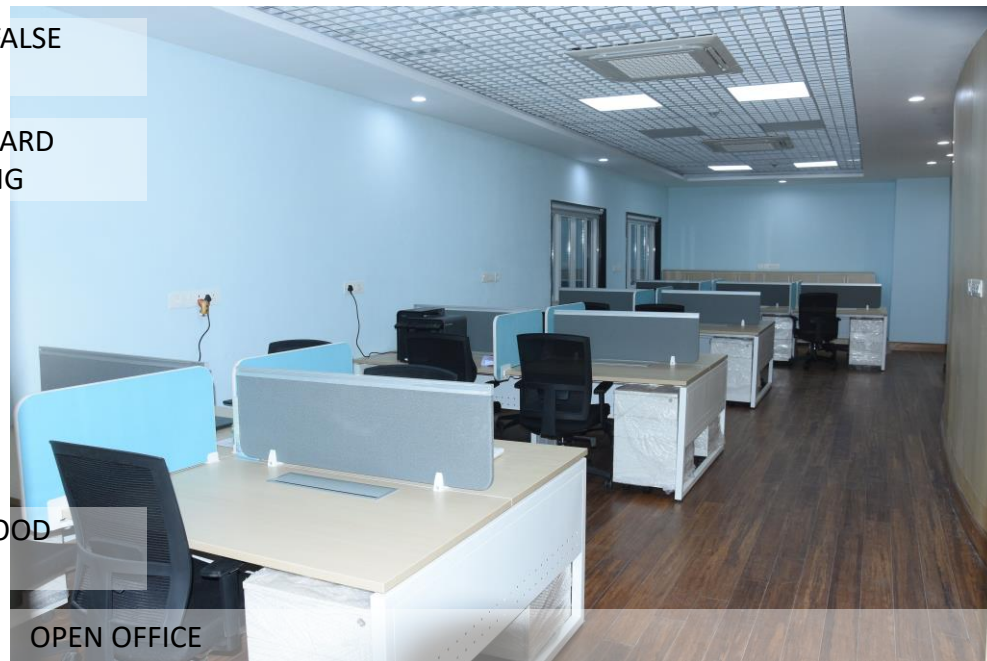


OPEN CELL FALSE  
CEILING

GYPSUM BOARD  
FALSE CEILING

BAMBOOWOOD  
FLOORING

OPEN OFFICE



OPEN CELL FALSE  
CEILING

GYPSUM BOARD  
FALSE CEILING



GRANITE FLOORING

WAITING AREA



- Sh. Vijay Prakash Rao, Senior Architect (CVP/PRND) ) - 9711400983
- Sh. Dhanabalan Chandran, Architect - 9650991386
- Smt. Swati Talwar, Asst. Architect
- Sh. Neeraj Kumar, Asst. Architect
- Smt. Lipika Ghosh, Asst. AD
- Smt. Madhu Monga, Asst. AD
- Smt. Poonam Wadhwa, Technical Officer
- Sh. A K Pandey, Chief Engineer Gandhinagar - 7763802343
- Sh. Baboolal Suthar, Executive Engineer (Civil) - 9978900701
- Sh. Raju Prasad, Executive Engineer(Electrical) - 8964940180
- Sh. Kapil Inani, AE(Civil)
- Sh. Sandeep Kumar, JE(Civil)



# IDBI ZONAL OFFICE

BLOCK 2, 8<sup>TH</sup> & 9<sup>TH</sup> FLOOR, A & B WING, EAST KIDWAI NAGAR, NEW DELHI

Area- 8000 sqm (approx)

Cost Estimate- 37.05 cr

Time Period – 6 months









GYPSUM BOARD  
FALSE CEILING

PVD

ITALIAN MARBLE  
FLOORING

RECEPTION



GYPSUM BOARD  
FALSE CEILING

VENEER CLADDING  
ON WALLS

ITALIAN MARBLE  
FLOORING



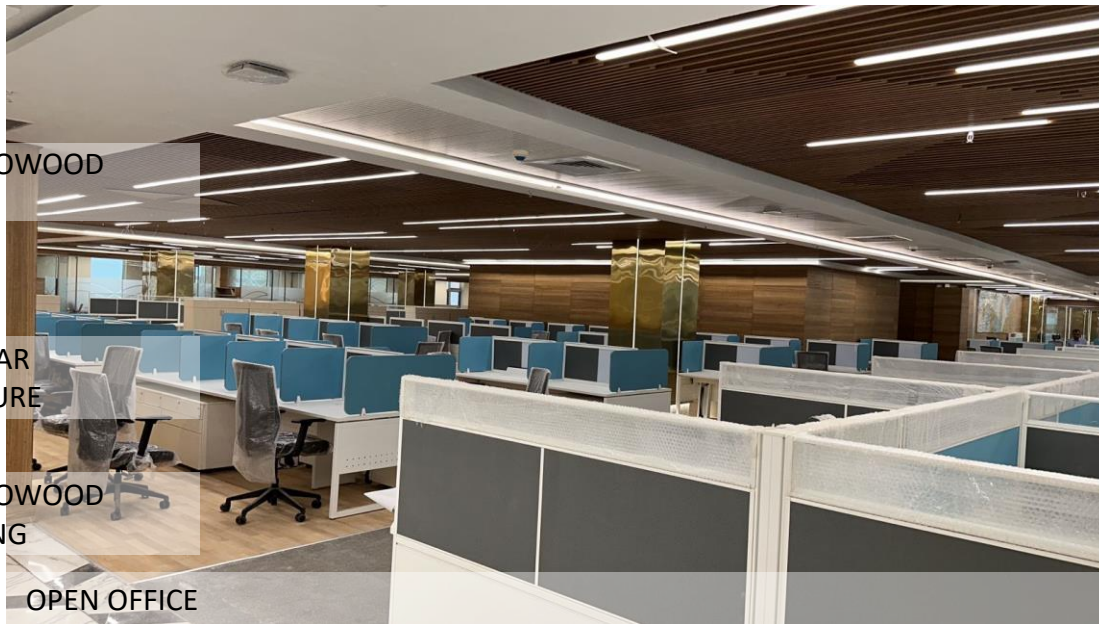
LOBBY

BAMBOOWOOD  
BAFFLES

MODULAR  
FURNITURE

BAMBOOWOOD  
FLOORING

OPEN OFFICE



OPEN CELL  
FALSE  
CEILING

PVD



OPEN OFFICE



BAMBOO WOOD  
BAFFLES



GRANITE FLOORING

OPEN OFFICE

BAMBOO WOOD  
BAFFLES



VENEER CLADDING  
ON WALLS

BAMBOO WOOD  
FLOORING

GM CABIN

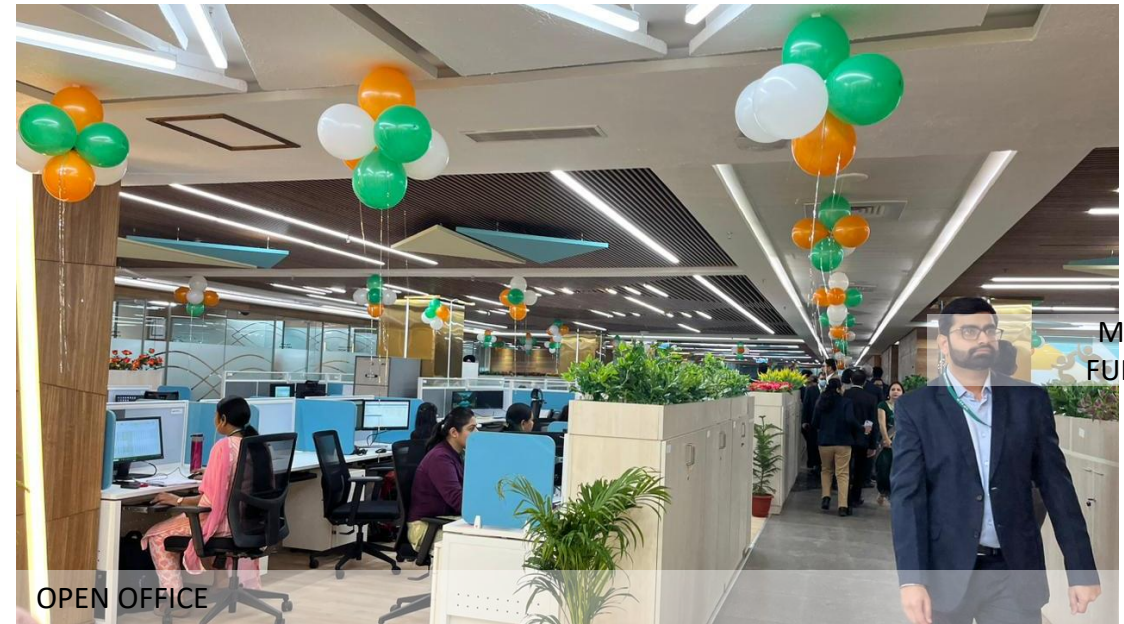
BAMBOO WOOD  
BAFFLES



BAMBOO WOOD  
FLOORING

MD CABIN

MODULAR  
FURNITURE



OPEN OFFICE



GYPSUM BOARD  
FALSE CEILING

VEENER CLADDING  
ON WALLS

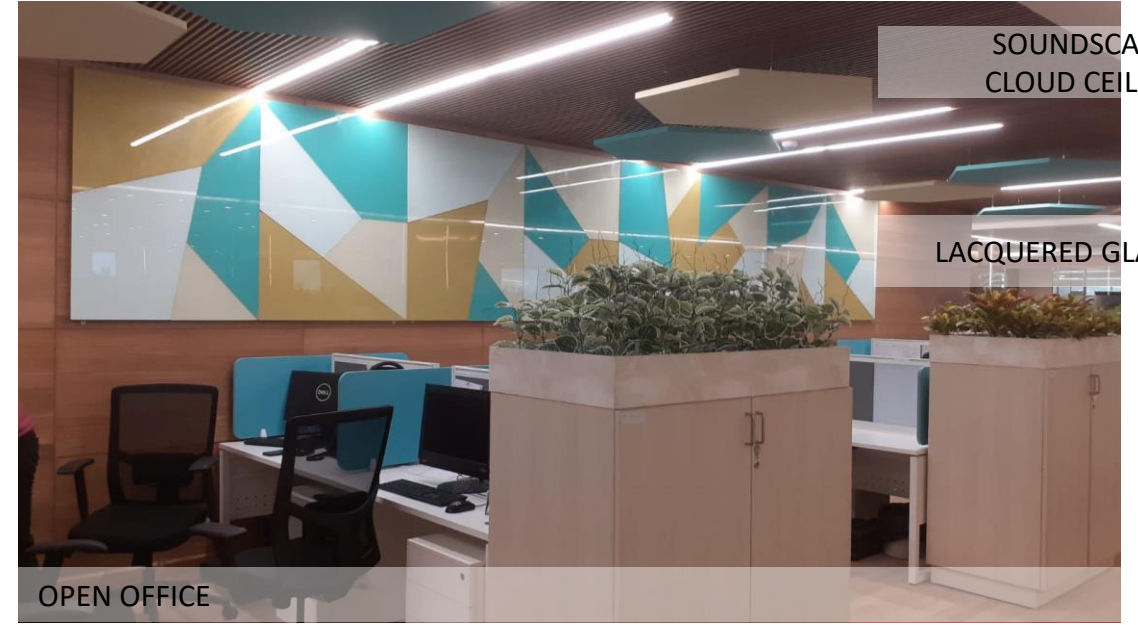
ITALIAN MARBLE  
FLOORING

LOBBY



SOUNDSCAPES  
CLOUD CEILING

LACQUERED GLASS



OPEN OFFICE

OPEN CELL FALSE  
CEILING



OPEN OFFICE

BAMBOOWOOD  
FALSE CEILING

MODULAR  
FURNITURE



OPEN OFFICE

- Sh. Vijay Prakash Rao, Senior Architect (CVP/PRND) - 9711400983
- Sh. Dhanabalan Chandran, Architect - 9650991386
- Smt. Swati Talwar, Asst. Architect
- Smt. Lipika Ghosh, Asst. AD
- Smt. Madhu Monga, Asst. AD
- Smt. Poonam Wadhwa, Technical Officer

- Sh. Manish Kumar, Superintending Engineer (Civil) - 9449129362
- Sh. Deen Bandu Gupta, Executive Engineer ( Civil) - 9953232787
- Sh. Debashish Chowdhary, Executive Engineer (Electrical) - 9811413650
- Sh. Neeraj Kalia, AE (Civil)
- Sh. Dharamveer Meena, AE (Electrical)
- SH. Amit , JE (Civil)
- SH. Balram Meena, JE (Electrical)





# GPOA 2

KG MARG, NEW DELHI

Area- 75454 sqm (approx)

Cost Estimate- 371.37 cr

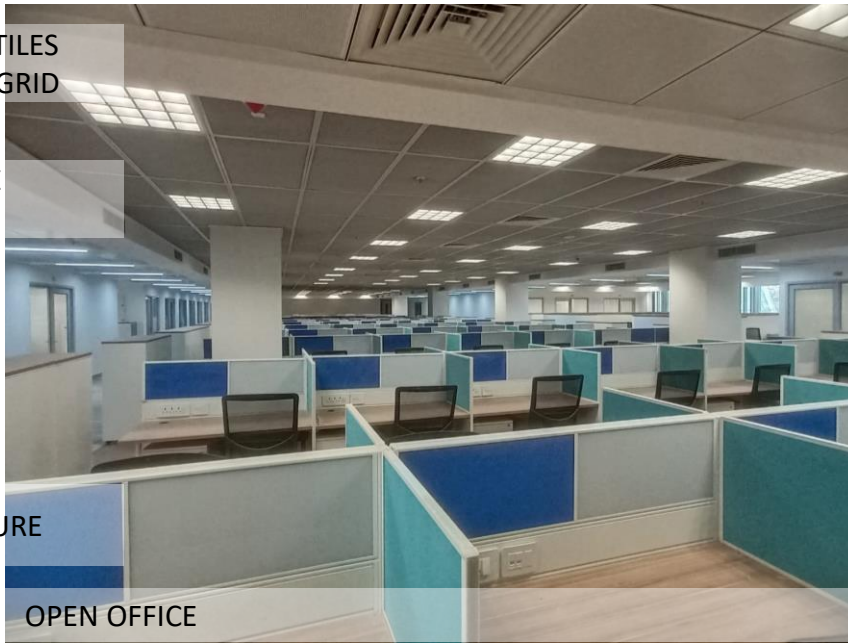
Time Period – 30 months



CALCIUM SILICATE TILES  
WITH SILHOUETTE GRID

METAL MESH FALSE  
CEILING

MODULAR FURNITURE



OPEN OFFICE



METAL MESH FALSE  
CEILING

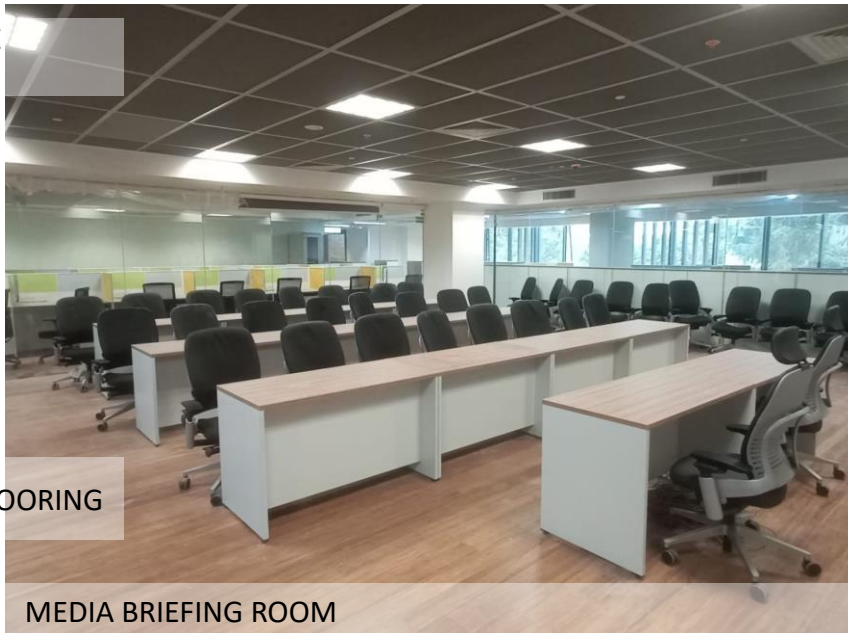
TEXTURE PAINT

BAMBOOWOOD  
FLOORING

LEVEL 14-18 OFFICE

METAL MESH FALSE  
CEILING

BAMBOOWOOD FLOORING



MEDIA BRIEFING ROOM



METAL MESH FALSE  
CEILING

GRANITE FLOORING

CORRIDOR



METAL MESH FALSE  
CEILING

MODULAR  
FURNITURE

BAMBOOWOOD  
FLOORING



LEVEL 14-18 OFFICE

METAL MESH FALSE  
CEILING

BAMBOOWOOD  
FLOORING



LEVEL 11 OFFICER

VENEER FALSE  
CEILING



MINISTER'S ROOM

ITALIAN MARBLE  
FLOORING



MINISTER'S ROOM





GYPSUM BOARD  
FALSE CEILING

BAMBOOWOOD  
BAFFLES

ITALIAN MARBLE  
CLADDING ON  
COLUMNS

VENEER CLADDING  
ON COLUMNS

ITALIAN MARBLE  
FLOORING

ATRIUM AT GROUND FLOOR

TYPICAL NDC SUITE



AERIAL VIEW



EYE LEVEL VIEW



- Sh. Vijay Prakash Rao, Senior Architect (CVP/PRND) - 9711400983
- Smt. Swati Talwar, Asst. Architect

- Sh. Gopal Varshney, Chief Engineer (Civil) - 9530702315
- Sh. Satyendra Kumar, Chief Engineer (Electrical) - 9971001869
- Sh. Prashant Kumar Gupta, Superintending Engineer (Electrical) -9819926383
- Sh. Rajiv Sharma, Executive Engineer (Civil) - 9810598911
- Sh. Suhail Ahmad, Executive Engineer (Electrical) - 9871101519
- Sh. Sudhir Kumar Gulati, Assistant Engineer (Civil)
- Sh. Rahul Gupta, AEE(Civil)
- Sh. Sudhir Kumar Gulati, AE(Civil)
- SH. Ajit Kataria, AE(Civil)
- Sh. Vinod Kumar, AE(Electrical)
- Sh. Praveen Kumar, AE(Electrical)





# INTERNATIONAL GUEST HOUSE

NASC COMPLEX, PUSA, NEW DELHI

Area- 7155 sqm (approx)

Cost Estimate- 5.5 cr

Time Period – 35 days



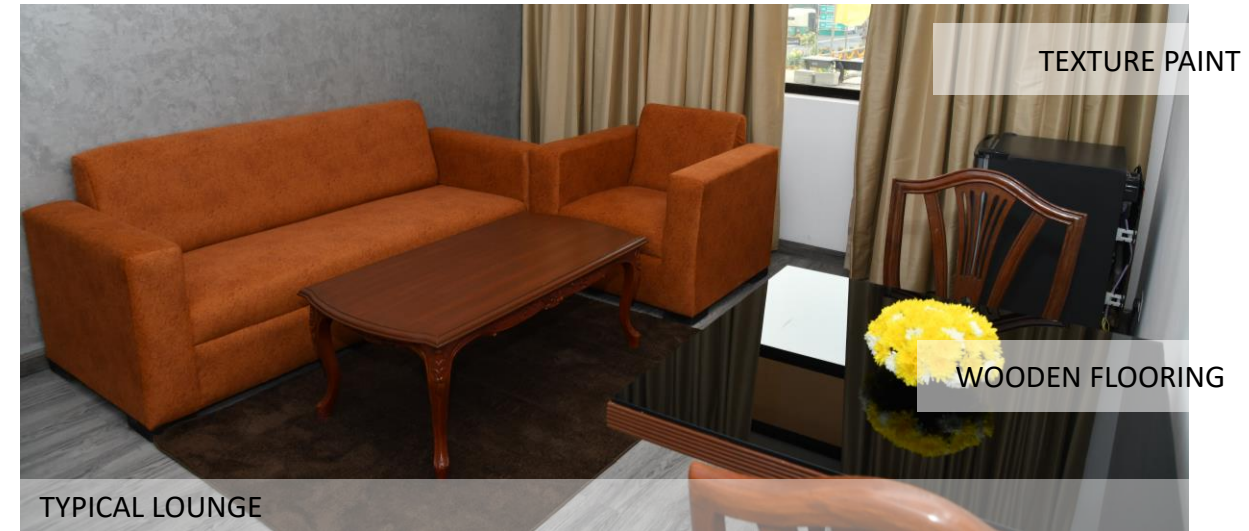
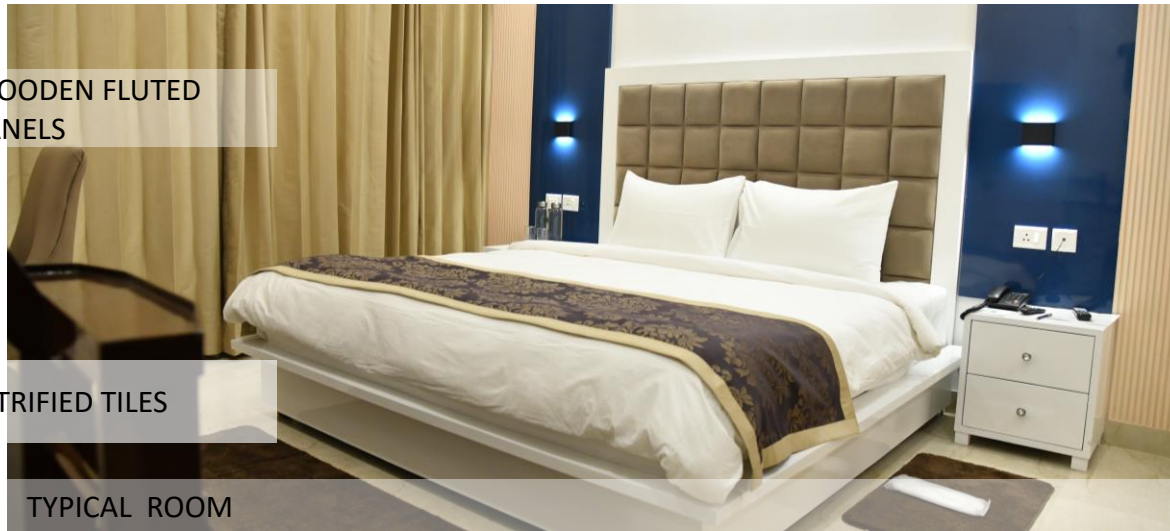


ENTRANCE LOBBY/RECEPTION



ENTRANCE LOBBY/RECEPTION







CURVED GLASS  
RAILING



ENTRANCE LOBBY



ENTRANCE LOBBY



GYPSUM BOARD  
FALSE CEILING

METAL BAFFLES

CNC CUT 3D PANELS

EXISTING GREEN  
MARBLE FLOORING

ENTRANCE LOBBY





- Sh. Vijay Prakash Rao, Senior Architect (CVP/PRND) - 9711400983
- Smt. Vidhi Prakash, Architect - 9888084148

- Sh.Sourabh Gupta, Superintending Engineer (Civil) - 8882354083
- Sh. Bharat Lal Meena, Executive Engineer (Civil) - 9057253952
- Sh. Ram Nakshatra Singh, Executive Engineer (Electrical) - 9419063549
- Sh. Rambhaj Nehra, AE (Civil)
- Sh. Bhim Singh Negi, AE (Electrical)
- Sh. Mahender Singh Nehra, JE (Civil)
- Smt. Manisha Vishwakarma, JE (Electrical)
- Smt. Monica Kandhari, JE (Electrical)



THANK YOU

